

Circuit Court

Department Mission

Except as otherwise provided by law, the Circuit Court shall have original jurisdiction in all civil and criminal matters within this state and such appellate jurisdiction in the circuit as the legislature may prescribe by law. The Circuit Court may issue all writs necessary in aid of its jurisdiction. The administration of justice serves the interests of the public. The state circuit courts for the county of Eau Claire serves the 102,965 residents of Eau Claire County.

Overview of Expenditures and Revenues

	2016 Actual	2017 Budget	2017 Estimate	2018 Request	2018 Approved	% Change
Expenditures:						
Personnel	\$ 354,980	\$ 361,490	\$ 398,410	\$ 398,000	\$ 381,163	
Services & Supplies	77,840	83,510	78,200	84,030	84,030	
Equipment						
Sub-Total	\$ 432,820	\$ 445,000	\$ 476,610	\$ 482,030	\$ 465,193	4.54%
Non-Discretionary Expenditures						
Medical	\$ 127,240	\$ 107,000	\$ 126,000	\$ 127,000	\$ 143,310	
Interpreters	38,840	35,000	34,200	35,000	35,000	
Transcription	6,180	4,500	4,320	4,500	4,500	
Attorney Fees	288,050	270,000	288,140	291,500	291,500	
Sub-Total	\$ 460,310	\$ 416,500	\$ 452,660	\$ 458,000	\$ 474,310	
Total Expenditures	\$ 893,130	\$ 861,500	\$ 929,270	\$ 940,030	\$ 939,503	9.05%
Revenues:						
Federal/State Grants	\$ 457,810	\$ 457,810	\$ 457,920	\$ 457,920	\$ 457,920	
Charges & Fees	173,680	183,120	256,080	258,010	274,320	
Miscellaneous	38,840	15,000	16,360	15,000	15,000	
Fund Balance Applied					-	
Property Tax Levy	197,610	205,570	205,570	209,100	192,263	-6.47%
Total Revenues	\$ 867,940	\$ 861,500	\$ 935,930	\$ 940,030	\$ 939,503	9.05%

Summary of Budget Changes and Highlights

Services and supplies will increase due to the addition of two new judges.

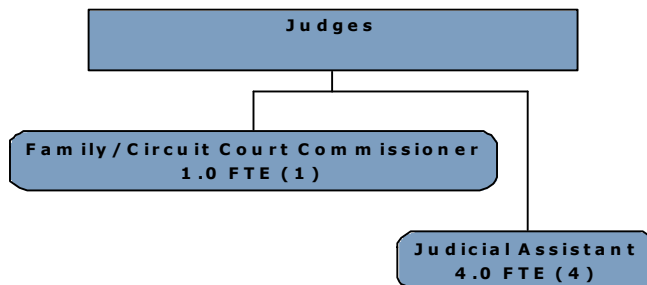
Non-Discretionary expenditures are mandated per Wisconsin Statutes; therefore, we have no control over budgetary issues in these line items of the Circuit Court budget.

REVENUES: We anticipate collecting approximately the same in 2018 as estimated in 2017 - this is a conservative number as Clerk of Courts has only been using SDC (State Debt Collection) for less than a year and have no statistics available.

Charges and Fees include reimbursement for: attorney fees; county share occupational license; family case fees; video rental; and ignition interlock

Miscellaneous Revenues includes interpreter reimbursement only - funds from State of Wisconsin reimbursed quarterly for interpreter services.

Organizational Chart



Program Financials

2018 Approved Program/Service	Program 1 Circuit Court			Totals
Expenditures:				
Personnel	\$ 381,163			\$ 381,163
Service & Supplies	84,030			84,030
Equipment	-			-
Sub-Total	\$465,193			\$465,193
Non-Discretionary Expenditures				
Medical	\$ 143,310			\$ 143,310
Interpreters	35,000			35,000
Transcription	4,500			4,500
Attorney Fees	291,500			291,500
Sub-Total	\$474,310			\$474,310
Total Expenditures	\$939,503			\$939,503
Revenues:				
Federal/State Grants	\$ 457,920			\$ 457,920
Charges & Fees	274,320			274,320
Miscellaneous	15,000			15,000
Property Tax Levy	192,263			192,263
Property Tax Levy	\$ 939,503			\$ 939,503
	Wis.Stats.			
Mandated Service?	753.03			

2017 Approved Program/Service	Program 1 Circuit Court			Totals
Expenditures:				
Personnel	\$ 361,490			\$ 361,490
Service & Supplies	83,510			83,510
Equipment	-			-
Sub-Total	\$ 445,000			\$ 445,000
Non-Discretionary Expenditures				
Medical	\$ 107,000			\$ 107,000
Interpreters	35,000			35,000
Transcription	4,500			4,500
Attorney Fees	270,000			270,000
Sub-Total	\$ 416,500			\$ 416,500
Total Expenditures	\$ 861,500			\$ 861,500
Revenues:				
Federal/State Grants	\$ 457,810			\$ 457,810
Charges & Fees	183,120			183,120
Miscellaneous	15,000			15,000
Property Tax Levy	205,570			205,570
Total Revenues	\$ 861,500			\$ 861,500
Mandated Service?	Yes			

Circuit Court		Budget \$939,503	Levy \$192,263		FTE's 5.00
Courts and Court Supportive Services is responsible for helping ensure efficient and effective operations of all the courts including court appointment attorneys, guardian at litem for youth and vulnerable adults, interpreter and transcription services, processing of medical claims, and jury management.					
OUTPUTS					
<i>(YTD column = Jan-Jun results)</i>		2014	2015	2016	2017YTD
Number of cases opened:		23,525	22,540	21,889	10,446
Number of cases disposed:		23,560	22,571	22,011	10,378
Number of jury trials held by judges only:		44	51	43	24
Number of jury trial days:		77	95	89	67
Number of court trials held by judges only:		165	138	138	55
Number of small claims court trials held by court commissioner only:		47	41	41	34
Number of days interpreters required:		126	123	113	67
Number of cases requiring interpreter services		246	262	210	118
Number of languages required during year:		6	7	7	9
Number of hearings held via videoconference:		211	206	206	125
Estimated cost savings using videoconference:		\$ 54,024	\$ 61,492	\$ 61,492	\$ 30,860
Performance Goal					
Outcome Measures		Benchmark	2015	2016	YTD2017
To ensure individuals who exercise their Constitutional right to an attorney have one appointed for them.	100% of individuals who exercised their Constitutional right to an attorney and were	100%	100%	100%	100%
Cases filed vs. cases disposed		100%	100%	99%	99%
Ratio of days interpreters required to number of parties requiring an interpreter		126/246 51%	123/262 47%	113/210 54%	67/118 57%
Ratio of jury trials to jury days		44/77 57%	51/95 54%	43/89 48%	24/67 36%
To ensure individuals with language barriers are provided the highest level of certified court interpreters available throughout the court process.	100% of individuals with language barriers were provided a state certified interpreter throughout the court process.	100%	78%	78%	78%