

District Attorney

Department Mission

The District Attorney's office is responsible for the enforcement of the criminal laws of the State of Wisconsin within Eau Claire County. Additionally, it is responsible for enforcing a variety of juvenile, conservation and traffic laws, together with various Eau Claire County ordinances. The primary area of responsibility of the District Attorney's Office is to prosecute individuals for committing felony and misdemeanor criminal offenses in Eau Claire County.

The District Attorney's Office manages four separate programs listed below in priority order:

- General Criminal Prosecution
- Victim/Witness Program
- Defer Acceptance Guilty Program and Diversion Programs
- Worthless Check/Restitution/Financial

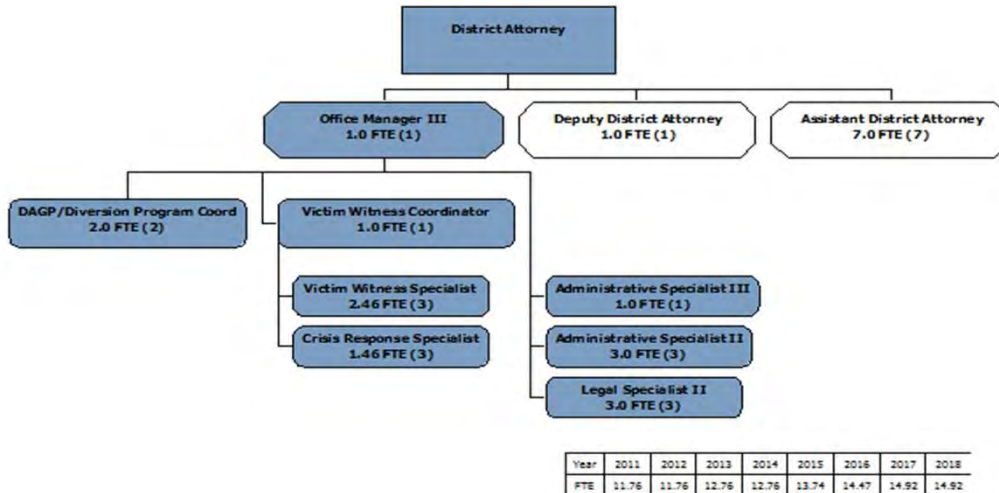
Overview of Expenditures and Revenues

	2016 Actual	2017 Budget	2017 Estimate	2018 Request	2018 Approved	% Change
Expenditures:						
Personnel	\$ 849,817	\$ 910,306	\$ 919,336	\$ 925,508	\$ 894,783	
Services & Supplies	81,645	52,000	52,000	77,752	77,752	
Contracted Services					-	
Equipment					-	
VAWA Personnel	39,026		97,200	97,200	97,200	
VAWA Services & Supplies	11,245		9,136	9,136	9,136	
Total Expenditures	\$ 981,733	\$ 962,306	\$ 1,077,672	\$ 1,109,596	\$ 1,078,871	12.11%
Revenues:						
Federal/State Grants	\$ 218,142	\$ 198,077	\$ 205,000	\$ 205,000	\$ 205,000	
VAWA Grant	50,271	-	106,337	106,337	106,337	
Diversion	59,520	75,000	50,000	75,000	75,000	
DAGP	70,686	75,000	75,000	75,000	75,000	
Discovery	40,122	15,000	50,000	40,000	40,000	
Restitution Surcharge	40,915	35,000	35,000	35,000	35,000	
Property Tax Levy	573,259	564,229	564,229	573,259	542,534	-3.85%
Total Revenues	\$ 1,052,915	\$ 962,306	\$ 1,085,566	\$ 1,109,596	\$ 1,078,871	

Summary of Budget Changes and Highlights

- Changes include VAWA Prosecutor Grant.

Organizational Chart



Program Financials

2018 Approved	General Prosecution Priority 1	Victim / Witness Priority 2	DAGP & Diversion Priority 3	Worthless Check Priority 4	Totals
Program/Service					
Expenditures:			(prev. Prog 4)	(prev. Prog 3)	
Personnel	\$ 425,300	\$ 259,998	\$ 145,160	\$ 64,325	\$ 894,783
Service & Supplies	50,000	27,752	-	-	77,752
Equipment	-	-	-	-	-
VAWA Personnel	-	97,200	-	-	97,200
VAWA Services & Supplies	-	9,136	-	-	9,136
Total Expenditures	\$ 475,300	\$ 394,086	\$ 145,160	\$ 64,325	\$ 1,078,871
Revenues:					
Federal/State Grants	\$ -	\$ 205,000	\$ -	\$ -	\$ 205,000
VAWA Grant	-	106,337	-	-	106,337
Diversion	-	-	75,000	-	75,000
DAGP	-	-	75,000	-	75,000
Discovery	40,000	-	-	-	40,000
Restitution	-	-	-	35,000	35,000
Fund Balance Applied	-	-	-	-	-
Property Tax Levy	435,300	82,749	(4,840)	29,325	542,534
Total Revenues	\$ 475,300	\$ 394,086	\$ 145,160	\$ 64,325	\$ 1,078,871
Mandated Service?	Yes	Yes	Yes	Yes	

2017 Approved	General Prosecution Priority 1	Victim / Witness Priority 2	DAGP & Diversion Priority 3	Worthless Check Priority 4	Totals
Program/Service					
Expenditures:			(prev. Prog 4)	(prev. Prog 3)	
Personnel	\$ 447,267	\$ 254,539	\$ 143,677	\$ 64,823	\$ 910,306
Service & Supplies	50,000	2,000	-	-	52,000
Equipment	-	-	-	-	-
Total Expenditures	\$ 497,267	\$ 256,539	\$ 143,677	\$ 64,823	\$ 962,306
Revenues:					
Federal/State Grants	\$ -	\$ 198,077	\$ -	\$ -	\$ 198,077
Charges & Fees	-	-	150,000	-	150,000
Miscellaneous	-	-	-	50,000	50,000
Fund Balance Applied	-	-	-	-	-
Property Tax Levy	497,267	58,462	(6,323)	14,823	564,229
Total Revenues	\$ 497,267	\$ 256,539	\$ 143,677	\$ 64,823	\$ 962,306
Mandated Service?	Yes	Yes	No	Yes	

#1 General Prosecution		Budget \$476,334	Levy \$436,334			FTE's 7.00
<p>In carrying out the duties of the Criminal Prosecution Program, attorneys and support staff provide investigative support to Eau Claire County Law Enforcement agencies, review law enforcement referrals, make criminal charging decisions and complete a wide array of case prosecution activities. As part of this program, attorneys and support staff are responsible for the enforcement of criminal, juvenile, conservation and traffic matters within Eau Claire County.</p>						
OUTPUTS						
<i>(YTD column = Jan-Jun results)</i>		<u>2013</u>	<u>2014</u>	<u>2015</u>	<u>2016</u>	<u>YTD 2017</u>
Number of felony cases prosecuted during the year:		972	1,207	1,320	1,476	681
Number of misdemeanor cases prosecuted during the year:		1,578	1,482	1,611	1,537	704
Number of criminal traffic cases prosecuted during the year:		588	488	507	431	236
Number of civil traffic/ordinances processed during the year:		1,677	1,633	1,360	1,400	725
Number of juvenile cases processed during the year:		371	414	420	463	252
Number of No-Issues processed during the year:		406	365	350	347	193
Total number of cases during the year:		5592	5589	5568	5624	2791
Performance Goals						
<u>Performance Goal</u>	<u>Outcome Measures</u>	<u>Benchmark</u>	<u>2014</u>	<u>2015</u>	<u>2016</u>	
Make prompt charging decisions.	Majority of arrested individuals make initial appearance with a complaint filed or have been released because of no issue or ordered in by the next available initial appearance date, unless all necessary police reports are not available or the individual is held for some other reason	90%	90%	90%	90%	
Make full use of diversion program and specialty courts.	The DAGP program operates with 250 or more participants per year and the Drug Court, AIM and Mental Health specialty courts operate at 90% or more of capacity. The Diversion program screens low risk individuals	90%	95%	95%	100%	
Promptly review investigative files.	Charges are issued or a no-issue decision made routinely on investigative files, unless follow up investigation or research is required. .		90%	95%	90%	
Litigate cases effectively.	The vast majority of defendants are convicted at jury trial and 90% or more of preliminary hearings result in bind-over decision	90%	90%	90%	90%	

#2 Victim Witness		Budget	Levy			FTE's		
		\$ 385,788	\$74,452			4.47		
Victim/Witness Program employees provide legally-required case notification to victims, provide crisis response support to victims prior to the filing of criminal charges, provide support to victims and witnesses during the course of case litigation and prepare various forms of reports required by state/federal authorities.								
OUTPUTS								
		<i>(YTD column = Jan-Jun results)</i>		2013	2014	2015	2016	YTD 2017
Number of referrals				5,828	5,761	5,937	5,990	3,113
Number of Initial Contact Letters				1,564	1,642	2,231	1,713	932
Number of No Contact Orders				969	581	1,165	1,197	460
Number of Court Cases				4,926	4,922	4,917	4,923	2,559
Performance Goal	Outcome Measures	Benchmark		2014	2015	2016		
Provide all victims with notification of filing of criminal charges and with request notification of court dates and case outcomes.	100% of victims receive notification of filing of criminal charges and requested notification of court dates and case outcomes.	100%		100%	100%	100%		
Successfully complete and submit all required reports to state/federal authorities.	100% of required reports to state/federal authorities were completed and filed in timely manner.	100%		100%	100%	100%		
#3 DAGP Program AND Diversion Program		Budget	Levy					FTE's
		\$ 150,165	\$165					2.00
The Deferred Acceptance of a Guilty Plea Program (DAGP) involves informal supervision of defendants in criminal cases. The community benefits because defendants receive necessary domestic abuse, alcohol abuse or other counseling services that would often not otherwise occur.								
OUTPUTS								
DAGP Program:		<i>(YTD column = Jan-Jun results)</i>		2013	2014	2015	2016	YTD 2017
Number of Defer Prosecution cases:				268	259	264	301	160
Amount of Defer Prosecution Program fees paid:				68,768	63,959	64,337	70,871	39,441
Diversion Program: (started in 2012)								
Number Diversion Cases				264	268	242	239	110
Number of Diversion Program Fees Paid				53,600	56,067	60,060	59,820	28,010
Performance Goal	Outcome Measures	Benchmark		2014	2015	2016		
85% or more of individuals participating in DAGP programs successfully complete the program.	Participants receive necessary counseling, treatment and support services as verified by 70% or more successful program completion rate.	90%		90%	90%	90%		
Less than 25% of individuals participating in DAGP program commit new crimes while in program.	Reduced recidivism with 25% or less of participants committing new crimes.	less than or equal to 25%						
The Diversion Program handles low risk first time offenders.				100%	100%	100%		

#4 Worthless Checks/Financial Program		Budget	Levy			FTE's
		\$ 66,584	\$31,583			1.00
District Attorney employees review referrals from Eau Claire County citizens and merchants of possible worthless check matters, prepare and send pre-prosecution "dunning" letters, issue criminal charges in appropriate cases and process payments.						
OUTPUTS						
<i>(YTD column = Jan-Jun results)</i>		2013	2014	2015	2016	YTD 2017
Amount of worthless check payments including service charges:		\$69,972	\$55,594	\$24,194	\$21,513	\$6,135
Amount of restitution payments collected:		\$121,120	\$127,216	\$65,522	\$71,522	\$19,103
Performance Goal	Outcome Measures	Benchmark	2014	2015	2016	
Worthless check activity within Eau Claire County will be prosecuted in accordance with state statute.	100% of worthless check activity will be prosecuted in accordance with WI State Statute 943.24 (1) and 943.24 (2).	100%	100%	100%	100%	
Payments by programs participants will be recorded accurately.	100% of payments will be recorded to the correct case using actual file retrieval verification or manual receipt documentation with follow-up file retrieval.	100.0%	100.0%	100.0%	100.0%	
Totals		Budget \$1,078,871	Levy \$542,534			FTE's 14.46